

## DRY BATTERY

DRY | CONVENTIONAL

# REF 6N11A-3A



6v

VOLTAGE - v

11.6Ah

CAPACITY - Ah (20Hr)

11Ah

CAPACITY - Ah (10Hr)

### TECHNOLOGY

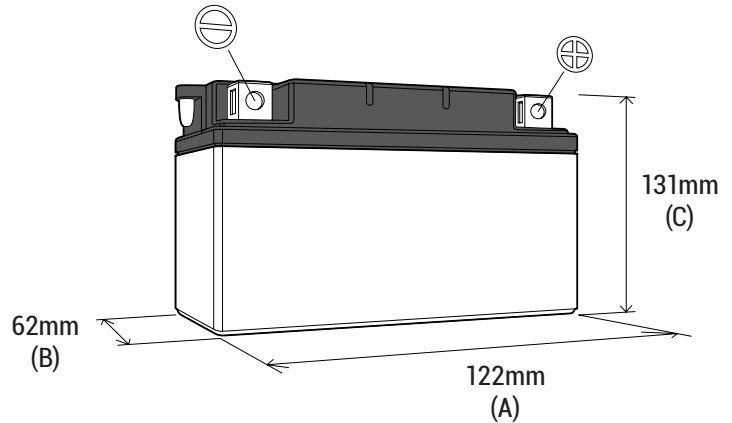
- Lead acid dry charged construction (absorbed acid)
- No acid in cells, must be filled with acid before use
- 6 & 12V batteries

### FEATURES

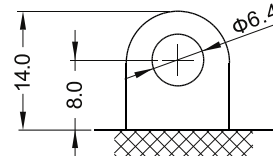
- Upright installation only
- Has to be checked periodically and refilled with water if necessary
- Internal gas emission through venting hole
- Handle with care to prevent acid spillage
- Regular life duration
- Does not need to be recharged while stocked

### DIMENSIONS

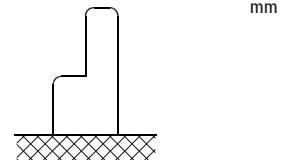
Length (A):	122±2mm
Width (B):	62±2mm
Container height:	131±2mm
Total height (C):	131±2mm



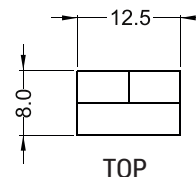
### TERMINALS



FRONT



SIDE



TOP

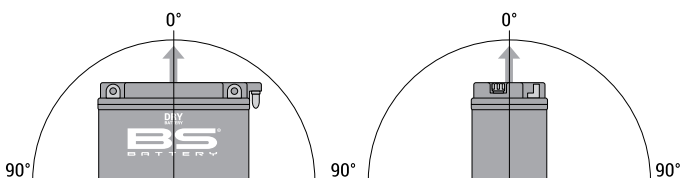
### UPGRADE FOR

-

### WEIGHT

Battery (with acid): Approx 2.01kg

### MOUNTING ANGLE



Upright installation only